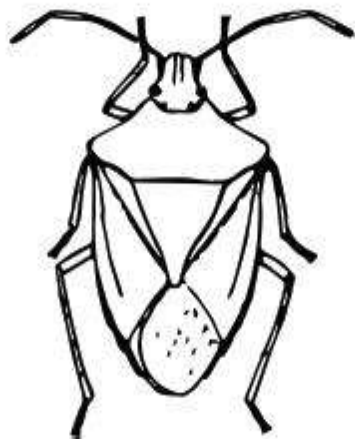


iPiPE

INTEGRATED PEST INFORMATION
PLATFORM FOR EXTENSION AND EDUCATION



www.ipipe.org

Download the iPiPE Lite app on your smartphone
Visit umassfruit.com for orchard IPM recommendations

Detailed instructions to download and use
iPiPE Lite on your smartphone



Scout your orchard and record observations
View your scouting history on ipipe.org
View maps of pest presence/abundance on your farm
umassfruit.com





Get your iPIPE
Lite app

Progress through sharing

Instructions courtesy of UMass Extension
Fruit Team 2018



Go to www.ipe.org

The screenshot shows a web browser displaying the homepage of the iPIPE (Integrated IPM Platform for Extension and Education) website. The browser's address bar shows the URL www.ipe.org. The website header features the iPIPE logo and the tagline "INTEGRATED IPM PLATFORM FOR EXTENSION AND EDUCATION". Below the header, a navigation menu includes "Home", "About", and "Contact". The main content area is titled "Welcome to iPIPE ... 'Progress thru Sharing'" and contains several featured links:

- Outreach Site:** iPIPE and Crop Pest Programs Explained. [Learn More...](#)
- Extension Website:** Pest Management Decision Making, Information and Tools. [Learn More...](#)
- IPM Elements:** List of IPM Practices. [Learn More...](#)
- Repository Site:** National Pest Observation Repository. [Report!](#) [Learn More...](#)
- Participant Site:** Add IPM, Enter Data, View Results and More. [Learn More...](#)
- Webinars Website:** Tools and Learning Available. [Learn More...](#)

On the right side of the page, there is a circular diagram with icons representing various IPM components. Below this is a "Recent Announcements" section with the following text:

Article accepted for publication on the use of social media for plant disease monitoring. The article, "Social Media, and How The Implications of Plant Disease Monitoring Using Social Media" has been recently accepted for publication in the journal Plant Disease: Rapid Response. [View Article](#)

iPIPE at the 36th International IPM Symposium. The iPIPE was presented as a exhibitor at the 36th International IPM Symposium in Baltimore, Maryland (10-12, 2011). A special issue of International IPM Symposium is available. [View Article](#)

Thank you to the 2011 IPM Symposium. [View Article](#)

Showing page 1 of 14 IPM Webinars

Sponsored by a USDA AFIS Cooperative Agricultural Project to change the culture in American agriculture to one of sharing agronomic pest observations and derivative information for the benefit of all stakeholders.

Website built and maintained by: [BlackBerry](#) | [Google](#) | [Yahoo](#)

Choose “**Participant Site**” toward the bottom-left of the page.

Participant Site

iPIPE Login

Email Address

Password

Login

Participant Website

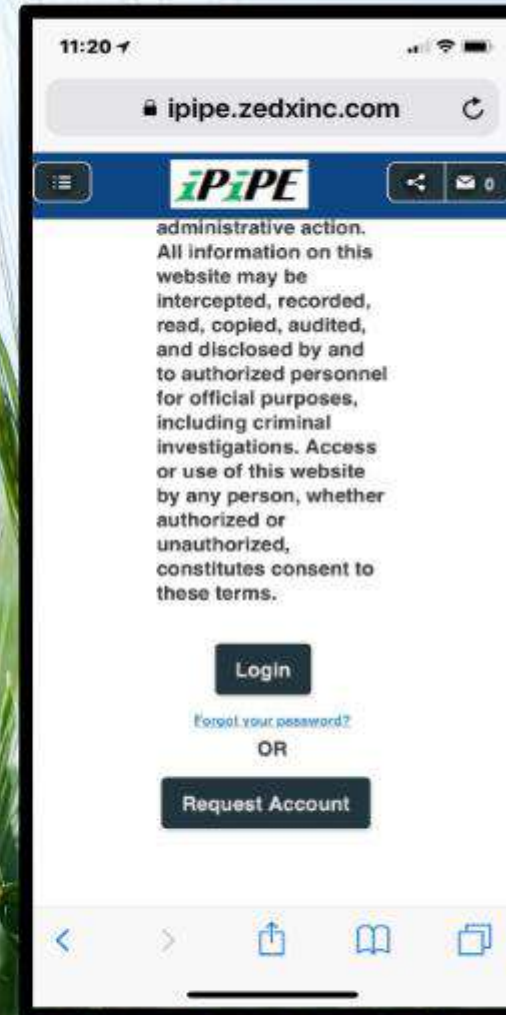
Join iPIPE, Enter Data, View
Models and Maps

[Learn More..](#)

On the next page, scroll down and click **“Request Account.”** Create an account by using an email as your user ID then creating a password.

You’ll only have to do this once and simply “log in” moving forward.

-Note that you will need to come up with a password that does not contain a word from the dictionary or any part of your name.



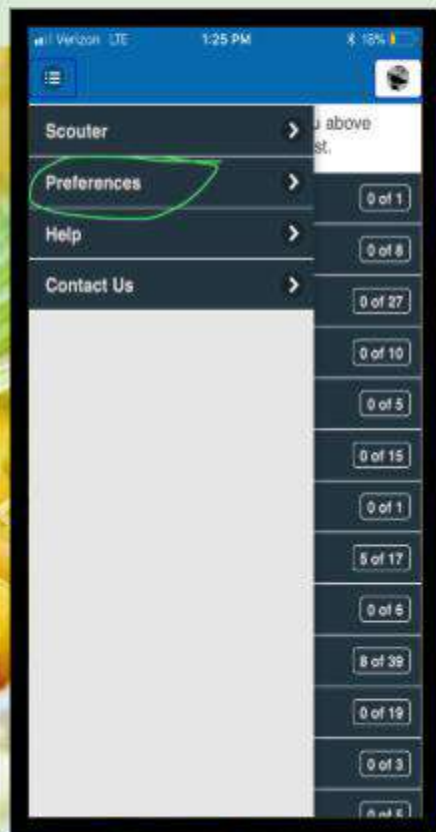
Once you have an iPIPE account, you can then search the App Store on your smartphone. Search for iPIPE Lite.

Click "Open" next to iPIPE Lite and download app on your phone. **Make sure you are downloading "Lite" and not "iPIPE Mobile"**.

-Once you have downloaded the iPIPE Lite app on your phone, you can sign in using the information you used to create your iPIPE account.



Using the **“preferences”** tab, choose your location(s), your crop(s), and your pest(s) you want to monitor. Then click **“sync”** at the top of the menu.





Scroll down for more crop options. When you click on a crop, a list of pests will appear and you can choose from those per crop. To add, just click on the plus signs.

-You can go in afterwards and add crops & pests.

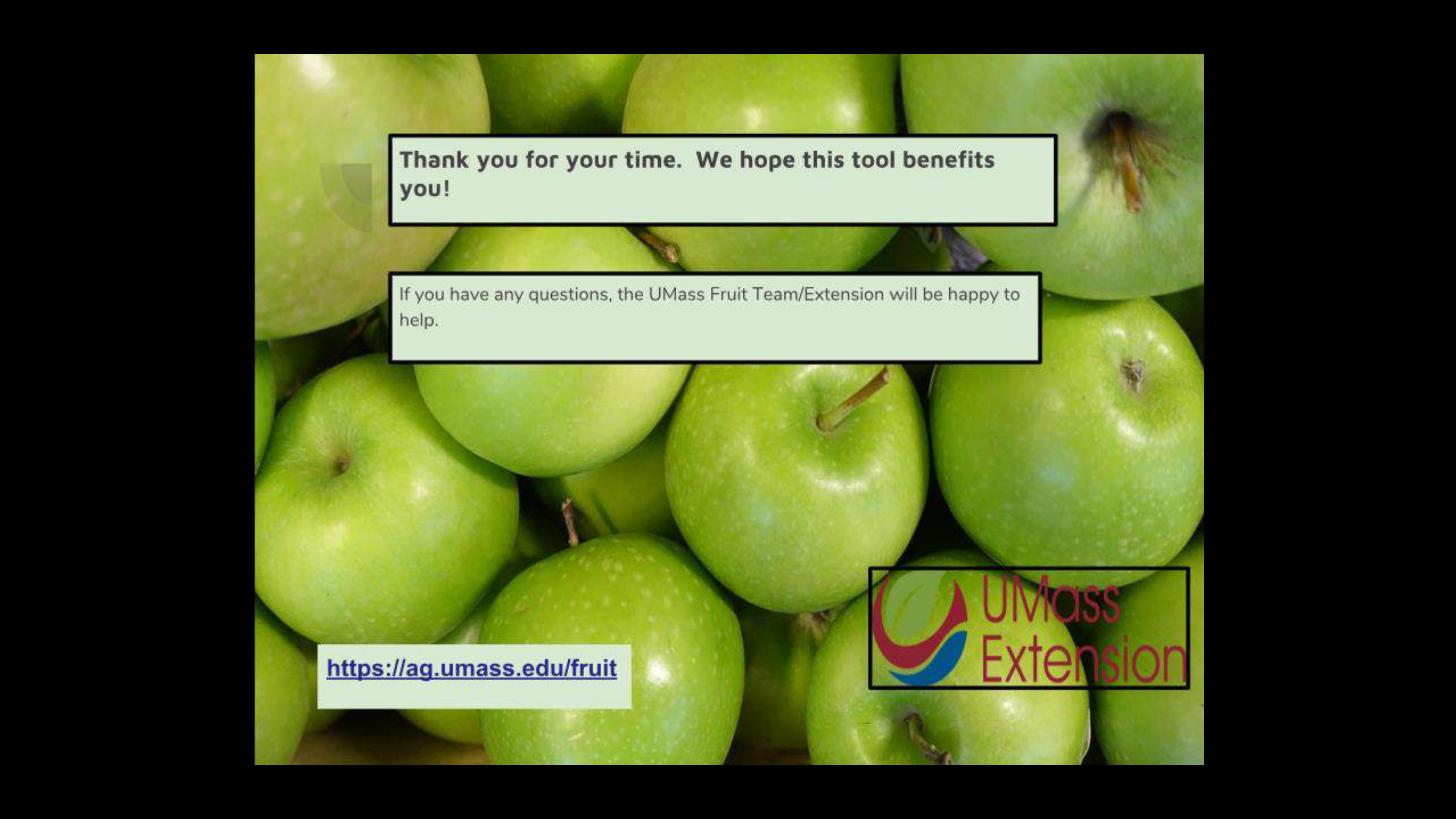
Now when you are out in the field, you can scout for your pests and enter your counts per pests in those specific crops.

-Your data will be archived and available for you to view once it is entered. By syncing, you can see the specifics for your location and your neighbors will only be able to access county-wide data.

-The more growers/scouts entering the data, the more useful the tool becomes for you.



Enter the data as you go along and have access up-to-date pest management information.



Thank you for your time. We hope this tool benefits you!

If you have any questions, the UMass Fruit Team/Extension will be happy to help.

<https://ag.umass.edu/fruit>





Other Helpful Links

Healthy Fruit <http://bit.ly/2yHRSyX>